

# GARWIN MCNEILUS WIND FARMS

## Dodge Center, Minnesota

Project Location

May 2003 – May 2004

Commercial On-line Date (COD)

18.25 MW

Total Capacity

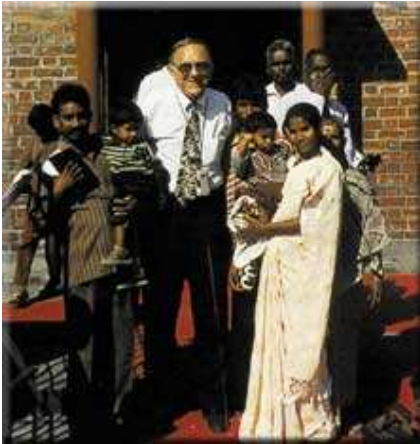
~53,000 MWh

Annual Energy Production



## Project Site

- Located in lightly populated farmland in Dodge County, Minnesota, home to some of the highest yielding agricultural land in Southern Minnesota (corn, soybeans, oats, hay)
- Supplies the MAPP electricity power pool, which is primarily powered by coal and other forms of non-renewable resources.
- Some of the wind farms are incorporated as nonprofits and support orphanages in Bangladesh and southeast Asia.
- Garwin McNeilus's wind development company is based in Dodge Center, Minnesota.



## Turbines

- 11 2-turbine wind farms in South-Central Minnesota developed between May 2003 and May 2004 by Garwin McNeilus
- Most wind farms built primarily with .95, 1.5, and 1.65 MW NEG Micon wind turbines as well other turbines manufactured by Vestas, each with wind rotor diameter of approximately 236 feet.
- Turbines operate in wind speeds as low as 9 miles per hour.

